

# Public Document Pack

**Tony Kershaw**  
Director of Law and Assurance

If calling please ask for:

Jack Caine on 033 022 28941  
Email: jack.caine@westsussex.gov.uk

[www.westsussex.gov.uk](http://www.westsussex.gov.uk)

County Hall  
Chichester  
West Sussex  
PO19 1RQ  
Switchboard  
Tel no (01243) 777100



20 November 2019

Dear Member,

## **Crawley County Local Committee - Thursday, 21 November 2019**

Please find enclosed the following document(s) for consideration at the meeting of the Crawley County Local Committee on Thursday, 21 November 2019 which was unavailable when the agenda was published.

<b>Agenda No</b>	<b>Item</b>
------------------	-------------

<b>6.</b>	<b>Highways Progress Statement</b> (Pages 3 - 6)
-----------	--

The attached documents were not available when the agenda was published

Yours sincerely

Tony Kershaw  
Director of Law and Assurance

**To all members of the Crawley County Local Committee**

This page is intentionally left blank

**Crawley County Local Committee  
5 November 2019**Update on Crawley Road Space Audit (RSA)

The scope for the Crawley RSA was agreed by WSCC/CBC members and stakeholders in 2018 and comprises of three elements, the first looking at parking within the town centre, the second looking at parking in outlying residential areas and the third looking at parking in Manor Royal. Technical notes on the first two elements of the scope have been completed. Unfortunately, progress in 2019 has been slower than expected but outline design work has now started and it is envisaged that some initial designs covering both the town centre and outlying residential areas will be completed by the end of 2019. It is hoped that public consultation on the outline designs could take place in the Spring of 2020. The attached plan shows the proposed initial study area (coloured pink), beyond the existing PARKING schemes (CPZs).

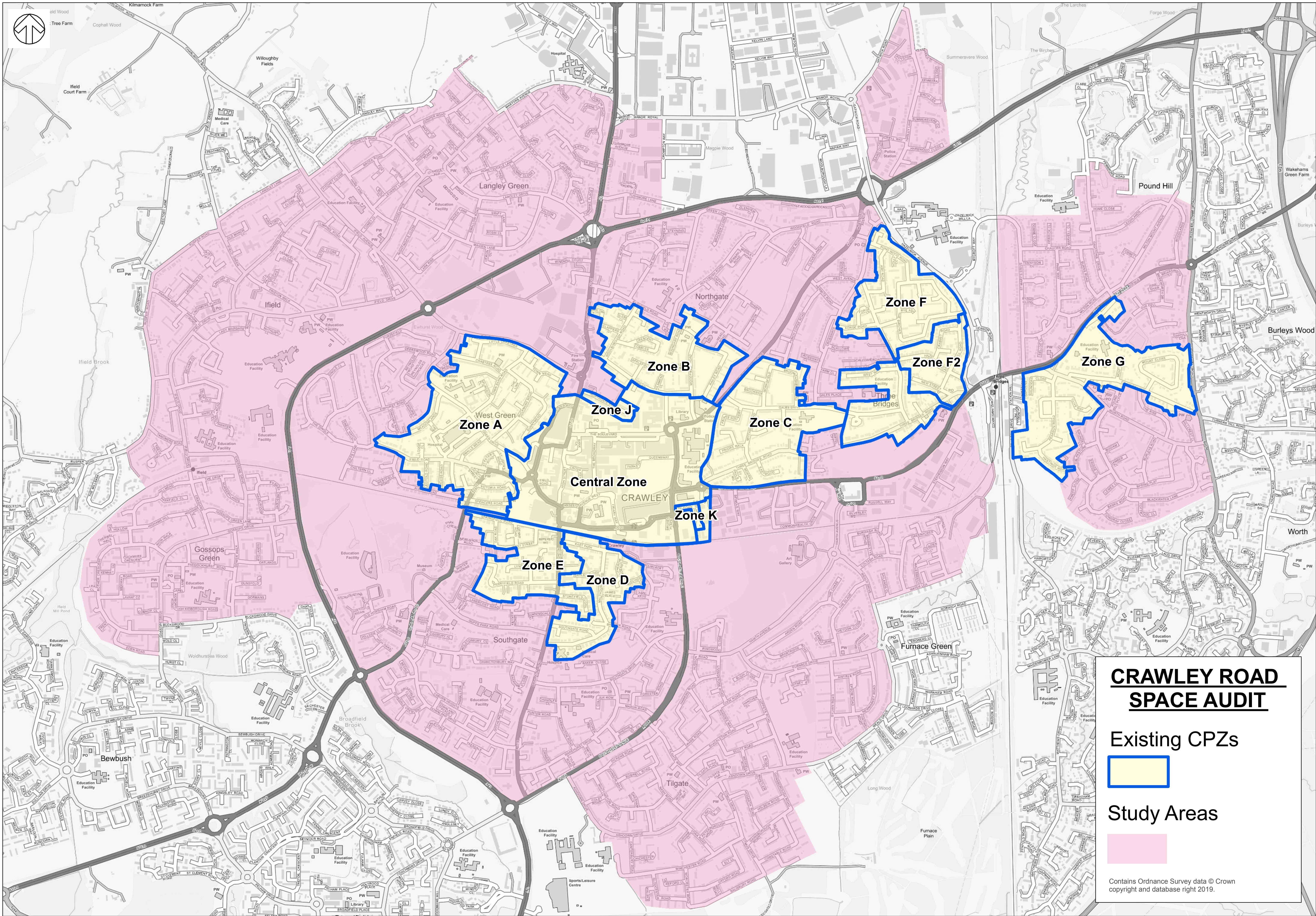
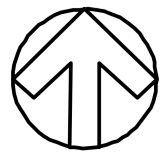
At this stage members should be advised that a number of CLC TRO requests for 2020/21 will be incorporated within these outline designs rather than considered in isolation. Officers are of the view that this avoids future duplication of work and offers wider benefits in terms of parking management. Several TROs will still be progressed in 2020/21 on safety/access grounds.

An informal consultation on the third element (Manor Royal Proposed Parking Management Plan) took place in the Spring and County Councillors were informed of the responses from this consultation as well as potential next steps at the CLC meeting on the 27th June 2019. A report will soon be made to the Director for Highways, Transport and Planning and a decision made on whether to hold a further statutory consultation later next year.

**Contact:** Mike Horton, Parking Strategy Team.

This page is intentionally left blank



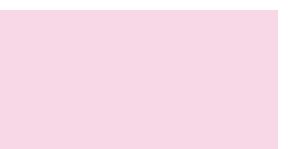


## CRAWLEY ROAD SPACE AUDIT

Existing CPZs



Study Areas



Contains Ordnance Survey data © Crown  
copyright and database right 2019.



This page is intentionally left blank